

1995 Convention and Annual Meeting

William C. Miller III

Bethesda, Maryland

The 1995 ASA Convention and Annual Meeting is being sponsored by the Brookside Gardens Chapter and will be held May 4-6 at the Woodfin Suite Hotel in Rockville, Maryland. One of our primary goals in selecting a convention site was to avoid much of the local traffic and congestion of the suburbs close to Washington D.C. The hotel is very easy to find, the rooms are extremely nice, and there is plenty of convenient parking.

Registration opens on Thursday, May 4 at 4:00PM, and the registration table will be located in the meeting room itself. Supper is on your own. See information in your welcome packet on FOOD. Following welcoming remarks at 7:00PM, the first speaker for the evening will be Phil Normandy of Brookside Gardens. After a brief seventh inning stretch, the second speaker will be Jim Plyler of Natural Landscapes in West Grove, Pennsylvania. The evening's events will conclude with THE AZALEAN Roundtable sponsored by Dr. Bob Hobbs, the editor of THE AZALEAN.

Roundtable Discussion on THE AZALEAN

In order to maintain and improve the ability of the Azalea Society of America to achieve its goals of promoting interest and exchange of knowledge of the azalea, and to study the principles of hybridization, propagation, culture and care of azaleas, the editor of THE AZALEAN will lead a panel discussion as part of the 1995 convention and annual meeting. Since the Society's quarterly journal, THE AZALEAN, is the main means of communication within the society, it is essential that material published in THE AZALEAN supports these goals. The discussion will focus on general content, subjects for articles, the need for regular columns, format, and how to inspire contributors to the Journal.

The panel will be held on Thursday evening, May 4, 1995, the first night of the convention. It is important that all of those attending the convention attend this meeting which will be about one hour in length. The format for the discussion will include brief presentations by three panelists, discussion among the panelists, and most important, comments and questions from the audience. The editor will summarize the discussion in closing remarks.

The brief remarks by the panelists will address the questions:

What is good about THE AZALEAN?

What changes would improve THE AZALEAN?

What should be specifically addressed in articles in THE AZALEAN?

The make-up of the panel will be an azalea novice, an experienced azalea hobbyist, and a professional azalea grower. If you would like to volunteer to be on the panel, please contact the editor:

ROBERT W HOBBS
737 WALNUT AVENUE
NORTH BEACH MD 20714-9644
PHONE: (301) 855-5269

If you decide not to volunteer, your telephone may ring sometime before May 4, 1995. □

On Friday morning, the registration desk will open at 8:30AM. The American style buffet breakfast in the hotel is free, so be sure to take advantage of it. We will board our buses promptly at 9:00AM to begin the tour. The first stop will be my place, a half acre, private garden featuring many unusual plants and landscape features. A mature landscape which I have only slightly modified (who enjoys mowing grass?), the overall theme is azaleas. Largely the vision and product of my in-laws, Lois and Paul Bowker, from whom we acquired the property four years ago, new beds have been created and a deck and patio/water garden complex have been created to take best advantage of the existing topographical characteristics.

The next stop will be McCrillis Gardens, the five-acre home of the late Virginia and William McCrillis, which was presented to the Maryland-National Capital Park and Planning Commission in 1978. It is managed by Brookside Gardens. Mr. McCrillis, a plant collector, was Assistant to the Secretary of the Interior under Presidents Roosevelt, Truman, and Eisenhower. Beginning in 1941 with azaleas and rhododendron, he expanded his collection to include many rare, unusual, and exotic plants.

The tour continues as we proceed to the Landon School where we will have lunch, view the 16th Brookside Gardens Chapter Azalea Show, the Perkins Garden, and the forty-second annual Landon Azalea Garden Festival.

Our final stop on Friday's tour will be at Brookside Gardens, which is one of my favorite examples of what local government can do right. The fifty-acre public display garden is operated by the Maryland-National Capital Park and Planning Commission and has something blooming all of the time. Known for its colorful seasonal displays, Brookside Gardens offers extensive educational programs and information services for children and adults, and it maintains a 2,000 volume horticultural reference library.

Returning to the hotel, supper will be on your own. The first speaker for

Mr. Phil Normandy

Title: Glimpses of Brookside Gardens and McCrillis Gardens.

A native of North Carolina, Phil Normandy received his Bachelor of Science degree in Ornamental Horticulture in 1974 from the North Carolina State University (Raleigh). In the subsequent three years, he was horticulturist for the 100-acre arboretum of the Bartlett Tree Research Laboratories in Charlotte, North Carolina. From 1977-1979 he was a Fellow in the Longwood Program, which is sponsored jointly by Longwood Gardens and the University of Delaware. Since July, 1979, he has been on the staff of Brookside Gardens, a facility of the Maryland-National Capital Park and Planning Commission (M-NCPPC) located in Wheaton, Maryland. As collections manager, he has responsibility for the acquisition and placement of the permanent plant collections as well as the supervision of garden maintenance. In addition, since 1986 he has been the grounds supervisor for McCrillis Gardens in Bethesda, Maryland, a five-acre mature azalea garden also owned by the M-NCPPC. Mr. Normandy has been an instructor in woody plants in the Landscape Design Program of the George Washington University since 1984. He has been a member of the Gold Medal Plant Award Committee of the Pennsylvania Horticultural Society since 1981.

Mr. James I. Plyler, Jr.

Title: The Native Azaleas of Eastern United States.

Jim Plyler is the owner of Natural Landscapes, a native plant nursery located in West Grove, Pennsylvania. He lives and breathes native plants, and the native azaleas of the eastern United States have been a particular passion. This interest extends beyond the nursery, from mountain balds to coastal plain woods, where he photographs blooming populations of native azaleas, then returns to collect the seed to be grown in the nursery. The native azaleas have become some of the nursery's most requested plants.

Friday evening will be Barbara Bullock, the Curator of the Azalea Collections at the U. S. National Arboretum. Those of us who are familiar with the National Arboretum are more than just a little excited about Barbara's accomplishments there.

The second speaker for the evening will be Dick West, who will report on his activities at the Ten Oaks Nursery. Those of you who were with us in 1988 will remember that we visited Dr. Bruce Parliman at the U.S.D.A. Plant Introduction Station at Glenn Dale, Maryland where the Glenn Dale hybrids were developed. We are focusing this year on the Ten Oaks Nursery which is one of the remaining recipients of the original distributions from the Plant Introduction Station. We will have a rare opportunity to see the effect of 40 or 50 years on the actual plants that were received directly from the Station at Glenn Dale. Also, if you appreciate orchids, you are in for a real treat.

We will conclude Friday evening with an auction. A number of very exciting items have been assembled, and you will just have to wait to see what they are.

Saturday morning will come early, since we have miles to cover. The free breakfast buffet in the hotel cannot be topped. We will board buses at 8:30AM

Ms. Barbara L. Bullock

Title: The National Arboretum Azaleas: A Four Year Retrospective.

Barbara Bullock has a Bachelor of Science degree in Horticulture with a specialization in Landscape Design as well as a Bachelor of Fine Arts degree from the University of Maryland. Barbara came to her current position as Curator of the Azalea Collections at the U.S. National Arboretum with over ten years experience in the nursery and garden center industry (with specific training in nursery crop production) and a love of the outdoors and working with people. Barbara has held this position since July, 1990, and has been a member of the Brookside Gardens chapter of the ASA for three years.

sharp for a half-day's worth of activities at the U. S. National Arboretum. Barbara Bullock has planned a full program, and we will have lunch at the Arboretum. We will reboard our buses at 3:00PM to travel to the historic Ten Oaks Nursery in Clarksville, Maryland, where we will be met by Ruth and Andy Adams and Dick West. Our visit to Ten Oaks will conclude at 5:30PM

Mr. Richard T. West

Title: The Ten Oaks Azaleas and the Glenn Dale Distribution Project.

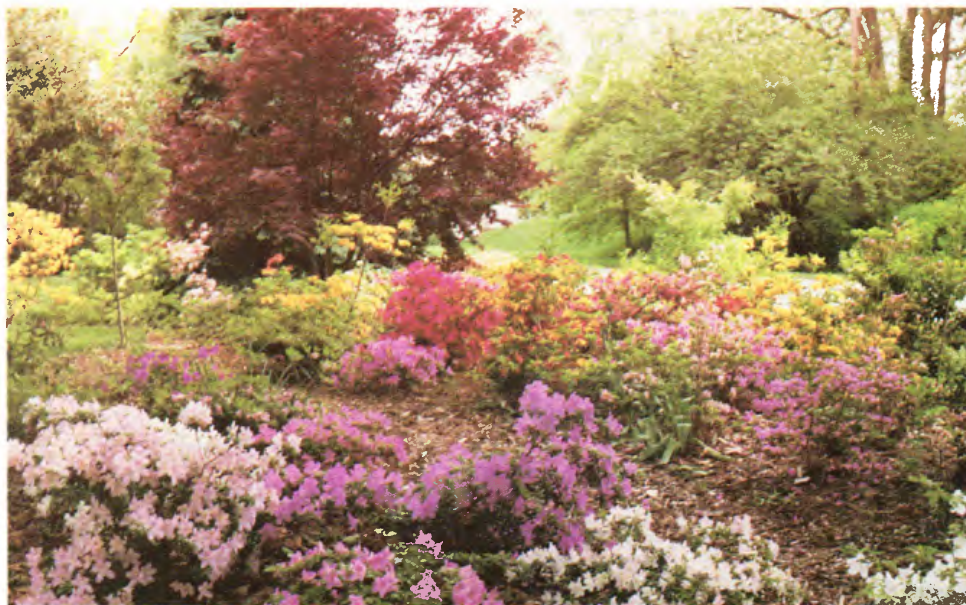
Dick West is a long-time member of the Azalea Society of America and occasionally writes articles for THE AZALEAN. He is especially interested in the Glenn Dale azaleas. Dick was born and raised in Washington, DC, and now resides in Columbia, Maryland. He works at the National Library of Medicine, National Institutes of Health, in Bethesda, Maryland, as a grants program officer. He has an undergraduate degree in psychology and the behavioral sciences from the American University and a master's degree in library and information sciences from the University of Maryland.

and we will return to the hotel. A happy hour will commence at 6:30PM, and the Banquet will begin at 8:00PM. Our Keynote Speaker will be Dr. Michael Raupp of the Entomology Department at the University of Maryland. The evening will conclude with the Society's Annual Meeting.

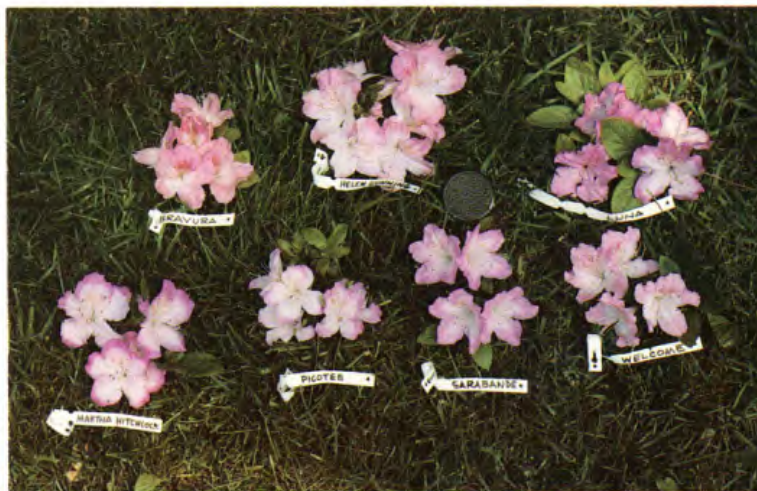
Dr. Michael J. Raupp

Title: Why Are Azaleas So Pest Prone and What Can Be Done About It?

Michael Raupp is a Professor of Entomology and Chairman of the Department of Entomology at the University of Maryland, College Park, Maryland. He holds advanced degrees from Rutgers University and the University of Maryland. His appointment is split between research and extension. His research interests focus on the mechanisms of plant resistance and biological control of insect pests of ornamental plants. He has published more than 80 papers that deal with the ecology and management of insect pests, and he has delivered over 100 invitational seminars or symposium presentations on these topics. Dr. Raupp's extension activities include the development, implementation, and evaluation of Integrated Pest Management programs for landscape plant systems. He recently wrote the first definitive review of this subject for the Annual Review of Entomology. He has received four regional or national awards for excellence in extension programming, the most recent of which was the ESA Branch Award for Distinguished Achievement in Urban Entomology. He works very closely with the tree care, landscape, and nursery industries to develop better methods of pest control. Dr. Raupp currently advises several graduate student committees. He has taught graduate level courses in Integrated Pest Management and Larval Taxonomy and assisted in teaching International Pesticide Problems, General Entomology, Programs in Integrated Pest Management and Extension Entomology.



ABOVE: The Miller Garden, a private, mature, garden in transition, featuring many evergreen and deciduous azaleas and companion plants. Photo credit: William C. Miller III.



LEFT: The Glenn Dale hybrids of the Ten Oaks Nursery. First row, left to right, 'Martha Hitchcock', 'Pico-tee', 'Sara-bande', and 'Welcome'. Second row, left to right, 'Bravura', 'Helen Gunning', and 'Luna'. Photo credit: William C. Miller III.

National Officers, Directors, and Chapter Presidents or their assigns should note that there will be two Board of Directors meetings, as is customary. The first meeting is scheduled for Thursday, May 4, from 2:00-5:00PM. The second meeting will be Sunday, May 7, from 9:00-12:00 noon. Both meetings will take place in the Columbia Room. Chapter Presidents are reminded that if they cannot attend, an alternate should attend in their place. Every chapter should be represented.

Travelers are reminded that Washington is famous for its rush hour traffic. Rush hour begins around 4:00PM and begins to let up around 7:00PM.

William C. Miller III is co-chairman of the Membership Committee and chairman of the Public Information Committee. He is a former Vice President of the ASA. He is a member of the Brookside Gardens Chapter and has served as Chairman of Horticulture for the chapter's annual flower show for many years. He is a frequent contributor to *THE AZALEAN*. □